



RSK Back Draft Damper

Back draft damper for circular ducts

Common Applications

- Toilet exhaust

Features

- Spring loaded butterfly flaps suits standard inline fans

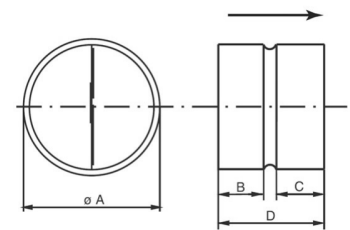
Back Draft Dampers

RSK Back draft damper for circular ducts, manufactured from galvanised sheets steel. The two blades are spring-loaded, which means that the damper can also be mounted vertically.

RSK's are butterfly type dampers designed to provide an effective back draft seal in ducted systems. These dampers can be installed either vertically or horizontally. The cases are fabricated from formed galvanised sheet. Butterfly elements are made from lightweight aluminium sheet held in the closed position with low resistance steel springs.

Technical Data

Model	A	B	C	D
RSK125	125	34	44	100
RSK150	150	34	44	100
RSK200	200	55	62	140
RSK250	250	54	62	140
RSK315	315	50	65	140



FK Fast Clamps

Fast Clamps for circular ducts

Common Applications

- Circular Ducts
- Inline Fans

Features

- Easy to fit

Fast clamps

Mounting clips which facilitate the installation and removal of fans for service and cleaning. Made from galvanised sheet metal and fitted with an 8mm neoprene lining which suppresses vibration and ensures a tight fit. The mounting clips are clamped together by two screws which allows for connecting ducts with a marginal difference in diameter.

Technical Data

Model	Dia
FK125	125
FK150	150
FK200	200
FK250	250
FK315	315



Non return dampers for rectangular or square fan and duct applications

Common Applications

- Where non return dampers are required

Features

- Variable sizes to suit most applications

Non Return Dampers

NRD's are shutter type dampers designed to provide an effective back draft seal in ducted systems. These dampers can be installed either vertically or horizontally. Flaps are fabricated from extruded PVC. Frames are fabricated from anodised aluminium with polymers corner joints.