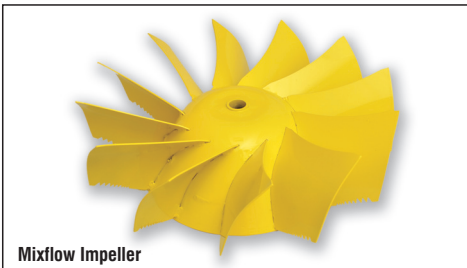


# Kitchen Mixflow Roof Fans - MVX Series



High performance, low noise, kitchen exhaust fan, mixflow impeller for medium volume exhaust applications.

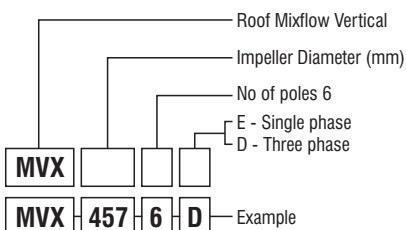
### Common Applications

- Suitable for high temperature kitchens
- Suitable for vertical installations

### Features

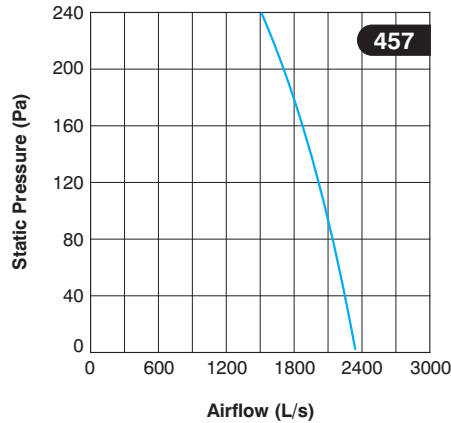
- Capable of handling up to 2400 L/Sec and static pressure up to 250 Pa
- Performance tests are in accordance with ISO5801 (2017)
- Noise level tests are under BS848 Part 2 (1985)
- Fan diameter from 457mm
- Fully weather proof galvanized steel housing with grease trap connections
- Sealed for life ball bearing motors
- Mixflow, aluminium impeller
- Motors in single or three phase, 2 speed and/or speed controllable.
- Circular connection with matching flange
- Painting or colour matching optional extra

### Order Code



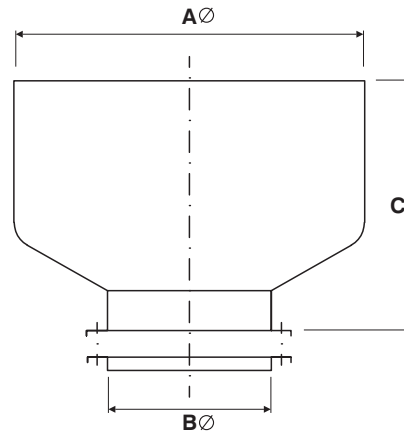
## MVX Series

### 6 Pole



### Technical Data

Model	Kg	A	B	C
MVX457	40	790	462	565



### Technical Data ■ 6 POLE

Model	Speed r/s	1 phase		3 phase		SPL dB(A) @3m
		KW	Amps	KW	Amps	
MVX457/6	16	0.75	4.46	0.75	2.18	52

Note: Amperages shown are a guide only.

Issue 2018.08