

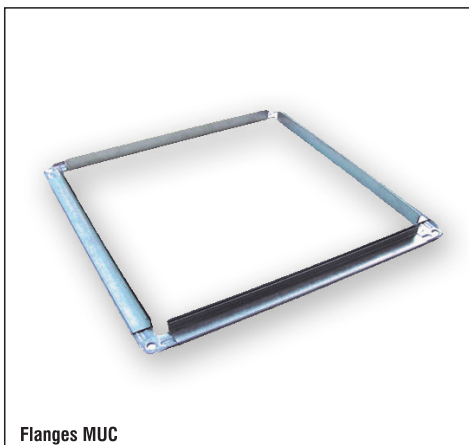
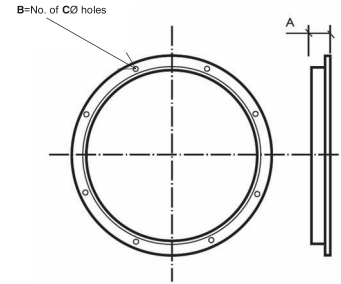


Flanges MUA

### Flanges MUA

#### Technical Data

Fan Size	A	B
315	30	8
400	30	8
450	30	12
500	30	12
560	30	12
630	30	12
710	40	16
800	50	16
1000	50	16
1120	65	16
1250	65	20
1400	65	20
1530	65	24
1600	65	24
1800	65	24
2000	65	24



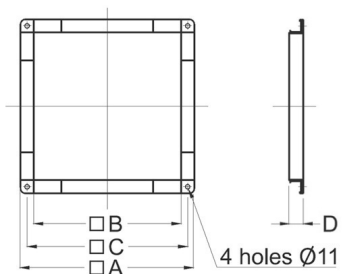
Flanges MUC

### Flanges MUC

Light weight square flange manufactured from galvanised sheet steel with corner fixing points, supplied in pairs. Foot bracket holes match fan case and flanges in each diameter.

#### Technical Data

Fan Size	A	B	C	D	kg
310	520	450	485	35	2
355	520	450	485	35	2
400	570	500	535	35	2
450	620	550	585	35	3
500	720	650	685	35	3
560	780	710	745	35	3
630	870	800	835	35	4
710	970	900	935	35	4





Foot Brackets/ Mounting Brackets MUA

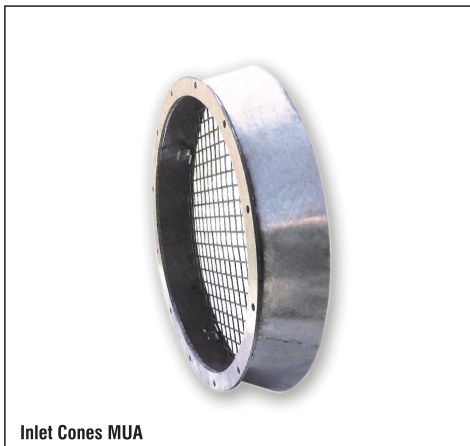
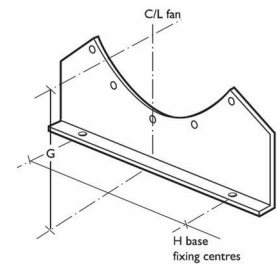
## Foot Brackets/ Mounting brackets MUA

Foot Mounting Brackets for all duct mounted axial Fans Manufactured from heavy gauge galvanised steel, supplied in pairs. Foot Bracket holes match fan case and flanges in each diameter.

### Technical Data

Fan Size	H
315	220
350	290
400	290
450	330
500	380
560	420
630	500
710	540
800	720

Fan Size	H
1000	910
1120	960
1250	1090
1400	1240
1530	1340
1600	1440
1800	1640
2000	1840



Inlet Cones MUA

## Inlet Cones MUA

CIC Inlet Cones for all AX/AT/AC/AY/AZ/AB Series Fans  
Manufactured from heavy gauge steel with a single bolted flange.  
Standard accessory losses (k) 0.38  
Pressure drop (Pa) =  $0.6 \times k \times \text{Velocity}^2$  (m/s)  
Cone flange holes match fan cases and flanges.

### Technical Data

Fan Size	A	B	Kg
315	93	405	2
400	103	490	3
450	110	545	4
500	118	605	5
560	93	680	6
630	104	765	9
710	117	855	11
800	130	950	13
1000	165	1170	23
1120	188	1375	32
1250	210	1545	40

Fan Size	A	B	kg
1400	230	1750	45
1530	255	1860	48
1600	265	1900	-
1800	300	2100	-
2000	340	2340	-

