

# Roof Axial Supply/Exhaust Fans



Available in a wide range of airflows to suit most applications.

### Common Applications

- Sizes from 560 - 1000mm

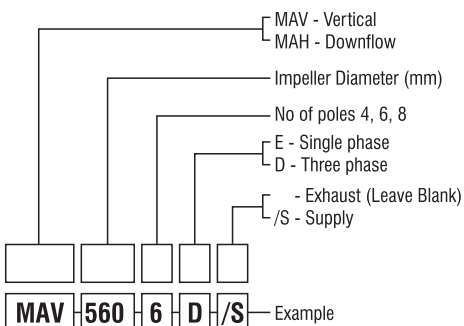
### Features

- Available in a wide range of speeds
- Vertical metal
- Down flow covers plastic
- Performance tests are in accordance with ISO5801 (2017)
- Noise level tests are under BS848 Part 2 (1985) and DIN 45635 Part 38

### Options

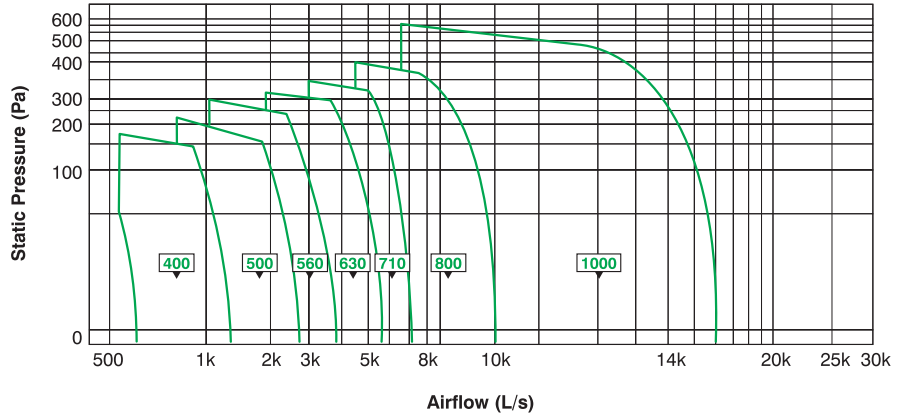
- Exe & smokespill & H Class
- Metal, PPG, Nylon or anti static blades
- Painting or colour matching optional extra

### Order Code

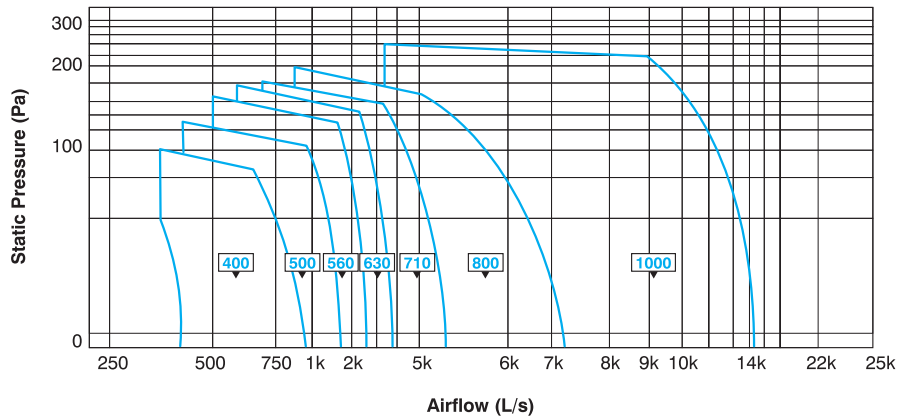


## MAV, MAH & MAH/S Series

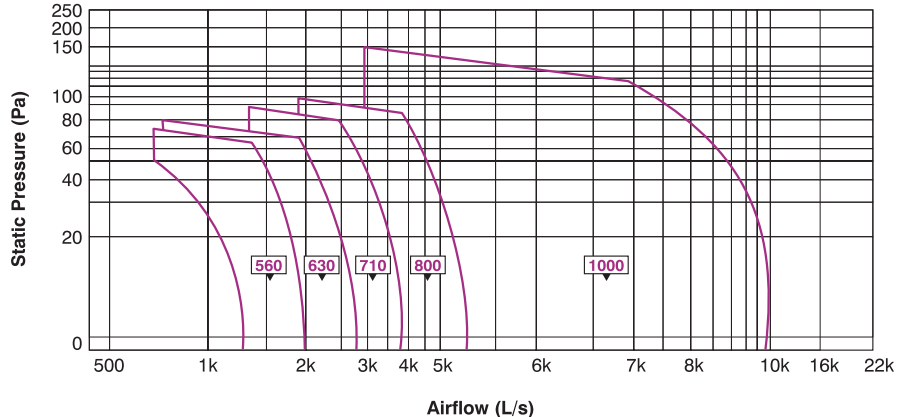
### 4 Pole



### 6 Pole



### 8 Pole



Please Note: Performance graphs are of a general nature due to various possible impeller configurations. Contact your local representative for specific data selection.

# Roof Axial Supply/Exhaust Fans

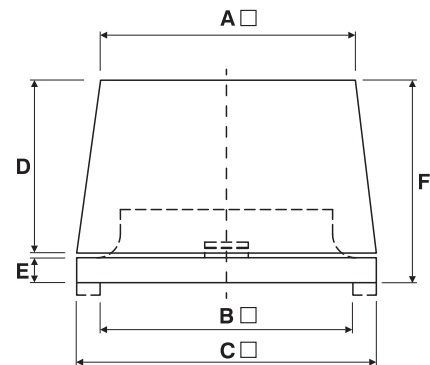
## Technical Data ■ 4 POLE ■ 6 POLE ■ 8 POLE

| Model         | Speed<br>r/s | Motor Kw |      | Motor Amps |       | SPL<br>dB(A)<br>@3m |
|---------------|--------------|----------|------|------------|-------|---------------------|
|               |              | Min      | Max  | Min        | Max   |                     |
| MAV/MAH560/4  | 24           | 0.37     | 2.20 | 1.10       | 4.90  | 64                  |
| MAV/MAH560/6  | 16           | 0.18     | 0.75 | 0.84       | 2.40  | 59                  |
| MAV/MAH560/8  | 12           | 0.18     | 0.55 | 0.95       | 2.15  | 51                  |
| MAV/MAH630/4  | 24           | 0.37     | 3.00 | 1.10       | 6.50  | 66                  |
| MAV/MAH630/6  | 16           | 0.18     | 1.10 | 0.84       | 3.10  | 64                  |
| MAV/MAH630/8  | 12           | 0.18     | 0.55 | 0.85       | 2.15  | 57                  |
| MAV/MAH710/4  | 24           | 0.75     | 4.00 | 1.95       | 8.40  | 70                  |
| MAV/MAH710/6  | 16           | 0.37     | 2.20 | 1.35       | 5.90  | 66                  |
| MAV/MAH710/8  | 12           | 0.18     | 0.75 | 0.95       | 2.40  | 59                  |
| MAV/MAH800/4  | 24           | 1.10     | 7.50 | 3.00       | 14.60 | 74                  |
| MAV/MAH800/6  | 16           | 0.37     | 2.20 | 1.35       | 5.90  | 69                  |
| MAV/MAH800/8  | 12           | 0.18     | 1.10 | 0.95       | 3.40  | 62                  |
| MAV/MAH1000/4 | 24           | 2.20     | 7.50 | 4.90       | 14.60 | 83                  |
| MAV/MAH1000/6 | 16           | 0.55     | 5.50 | 1.65       | 12.80 | 75                  |
| MAV/MAH1000/8 | 12           | 0.37     | 3.00 | 1.70       | 8.40  | 68                  |

Note: Contact CFM Airsystems for specifications notes. Amperages shown are a guide only.

### Technical Data

| Model   | Kg  | A    | B    | C    | D   | E  | F   |
|---------|-----|------|------|------|-----|----|-----|
| MAV560  | 85  | 626  | 615  | 715  | 355 | 80 | 450 |
| MAV630  | 90  | 686  | 695  | 795  | 425 | 80 | 520 |
| MAV710  | 100 | 776  | 740  | 840  | 435 | 80 | 530 |
| MAV800  | TBA | 816  | 810  | 960  | 555 | 80 | 650 |
| MAV1000 | TBA | 1034 | 1010 | 1160 | 585 | 80 | 680 |



### Technical Data

| Model   | Kg  | A    | B    | C    | D  | E   |
|---------|-----|------|------|------|----|-----|
| MAH560  | 85  | 800  | 615  | 715  | 80 | 500 |
| MAH630  | 90  | 960  | 695  | 795  | 80 | 545 |
| MAH710  | 100 | 1200 | 740  | 840  | 80 | 585 |
| MAH800  | TBA | 1230 | 810  | 960  | 80 | 670 |
| MAH1000 | TBA | 1410 | 1010 | 1160 | 80 | 710 |

Note: Please note the above information applies to MAH & MAH/S.

